

# MATRIX ALTERNATIVE ASSET MANAGEMENT LLP ("MAAM")



## MATRIX GROUP

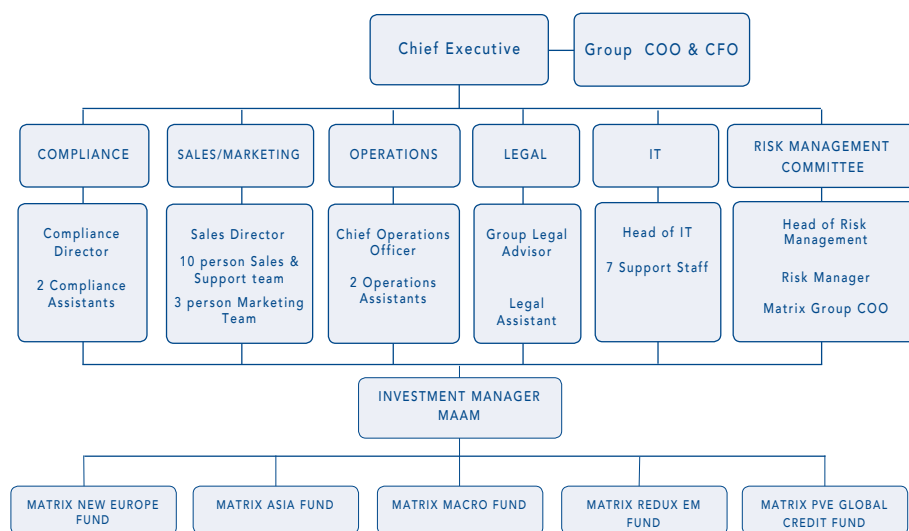
Matrix Group is a privately owned financial services business founded in 1987 whose areas of expertise include Asset Management (Fund of Funds, Alternative Funds, Cash Funds, Private Client Management, Private Equity and VCTs), Investment Banking, Property and Specialised Finance. As at 30 April 2010, Matrix has raised over £9.5 billion for its single investment products and has more than £3 billion of funds under management. Matrix currently employs over 235 staff.

## MATRIX ALTERNATIVE ASSET MANAGEMENT LLP ("MAAM")

MAAM is part of the Matrix Group and provides discretionary investment management services. MAAM became a registered company on 1 January 2006 and has assets under management of \$356 million as at 30 April 2010.

## INFRASTRUCTURE

- MAAM appoints Fund Managers with proven track records, strategy specific expertise and who are accustomed to operating within a risk management framework.
- The Investment Management process is supported by robust operational controls and the necessary IT systems.
- Matrix Group provides independent risk management, legal advice and compliance expertise.
- Experienced Sales and Marketing departments are responsible for promotion and distribution.



## PERSONNEL

Matrix Alternative Asset Management has experienced teams working in Risk Management, Compliance and Operations to provide the necessary platform to allow Fund Managers and Investment Teams to focus solely on managing assets.

### Chris Merry - CEO

Chris joined Matrix in June 2007. Before joining Matrix he was CEO of Whitehead Mann Group Plc, the publicly listed executive recruitment firm, which was taken private by an MBI team in late 2006. Prior to that he was Finance Director of Clifford Chance LLP, the global law firm.

### John Owen - Group COO & CFO

John joined Matrix in March 2009 as Group Chief Operating Officer and Finance Director. John has spent his entire career in and around the financial services industry. In 1998, John became one of the founding partners of Capco. He left Capco in 2005 to join ING as Chief Operating Officer of the Wholesale Banking division.

### Paul Condon - MAAM COO

Paul joined Matrix in January 2008 from Shooter Fund Management where he ran their Operations, managing a variety of roles. Paul started in the City in 1984 in International Banking and moved through many mergers and takeovers. Most recently he spent over 7 years with Robert Fleming, and then JP Morgan, in their Middle Office covering global equities, credit and fixed income.

### Tiraneh Tehranchian - Head of Risk Management

Tiraneh joined Matrix in January 2010. Before joining Matrix she was head of Risk at Man Global Strategies, Man Investments for nearly 5 years. Prior to that she was a risk manager at Abbey National Treasury Services. She started her career in the City at JP Morgan and is a chartered accountant.

### Iain Anderson - Group Head of IT

Iain joined Matrix in February 2010. Prior to joining Matrix, Iain spent 9 years as the CTO of GLG Partners, a large European hedge fund, and previous to that 14 years within the technology division of Goldman Sachs in London.

### Matrix Asia Fund: A Pan-Asian Long/Short Equity Fund



The Fund is managed by Rupert Foster. Rupert has more than 16 years experience in managing Asian long/short funds gained through previous roles with Swiftsure Capital, FM Capital Management and Mercury Asset Management. Rupert joined Matrix in February 2008 to run the Matrix Asia Fund.

- Returned +16.69% in 2008 and +17.74% in 2009.
- High conviction Fund with a thematic and macro overlay.
- Dynamic long and short positions to reflect stock market conditions.
- Holds a portfolio of approximately 30 to 50 stock positions at any one time.
- Seeks to add value through alpha generation in both the long and short books.
- Rupert leads a team of two additional analysts with Asian investment expertise.

Matrix has recently launched the Matrix Asia UCITS Fund, a UCITS III compliant fund, also managed by Rupert Foster and with a similar investment objective to the Matrix Asia Fund.

### Matrix Redux EM Fund: A Global Macro Fund with a particular focus on Emerging Markets



The Fund is managed by Sudeep Singh. Sudeep has more than 16 years experience trading securities in emerging markets. He was formerly a Senior Portfolio Manager of emerging markets for Caxton Associates, LLC, and served as Managing Partner and Chief Investment Officer of Lotus Capital Partners, LLP.

- Top down macro-economic approach analysing developed and emerging markets to generate investment ideas.
- Country specific analysis monitoring political developments, technical analysis and market intelligence to finesse the investment strategy.
- Uses a broad range of highly liquid instruments including, but not limited to, equity indices, fixed income & FX.
- Typically will run 3 to 5 themes at any one time and 3 to 5 positions within those themes.
- Targets low correlation to other emerging market funds and broad market indices.

### Matrix PVE Global Credit Fund: A joint venture between MAAM and PVE Capital LLP



The Fund is managed by Gennaro Pucci, CIO of PVE Capital, who leads an investment team of 8 people. Gennaro was previously Head of Trading at Credaris where he was responsible for the management of assets in excess of \$1bn. Credaris' two funds were a \$900m Credit Fund and the \$170m Credaris Credit Fund (formally The Correlation Fund).

- The Fund expresses a strategic macro credit view using the most appropriate credit instruments to achieve high annualised returns.
- It aims to deliver these in a variety of market conditions by fundamental analysis and active trading.
- The Fund's investible universe is principally credit derivative and quant strategies, single name credits and secured investments (ABS).
- The Fund's research focuses on qualitative and quantitative analysis of the single issuer market, credit market, default view, macro environment, micro analysis, relative value and real time monitoring.
- The Fund's CIO and traders work together with its researchers to identify the most attractive targets.

For further information on any of our Funds, please contact us on +44 (0)20 3206 7222 or email [sales@matrixgroup.co.uk](mailto:sales@matrixgroup.co.uk).

### IMPORTANT NOTICE

Issued by Matrix Money Management Limited, of One Vine Street, London, W1J 0AH, authorised and regulated by the Financial Services Authority, number 190673. These Funds are unregulated collective investment schemes for the purposes of the Financial Services and Markets Act 2000 of the United Kingdom (the Act).

UK investors should be aware that the Funds are not covered by the Financial Services Compensation Scheme and the protections provided by the UK regulatory system will not apply. This document may only be issued in the United Kingdom to persons who are authorised to carry out investment business under the Act and to persons to whom Shares are permitted to be promoted in accordance with the Financial Services (Promotion of Unregulated Schemes) Regulations in 1991 as from time to time amended. Past performance is not a guide to future performance.

The value of investments and income from them can go down as well as up and investors may incur substantial losses or lose their entire investment. Exchange rates may cause the value of overseas investments to rise or fall. Potential investors should be aware that investment into the Funds should be seen as long term.

No representation or warranty stated or implied is made or given by any person as to the accuracy or completeness of the information contained in this document and no responsibility or liability is accepted for any such information or opinion.

© 2010 Matrix Money Management. All rights reserved.